

King Charles III England Coast Path – Hunstanton to Sutton Bridge

26th November 2024

Contents

Overview of establishment of the King Charles III England Coast Path

- Part 1 - Trail Overview
- Part 2 - Protected Landscapes
- Part 3 - Infrastructure Delivery
- Part 4 - Challenges



Subtitle goes here

Trail overview



Stretch 4 – Hunstanton to Sutton Bridge

33 miles (53km) total length

- 27.5 miles within Norfolk however Norfolk County Council established the 5.5 miles up to Sutton Bridge in Lincolnshire
- Opened 6 March 2024



Norfolk
County Council



Norfolk Coast
Area of Outstanding
Natural Beauty (AONB)

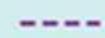
Broads National Park



Norfolk Coast Path



Norfolk Trail route



Rebellion Way cycle route



Railway



Steam Railway



Subtitle goes here

Protected Landscapes



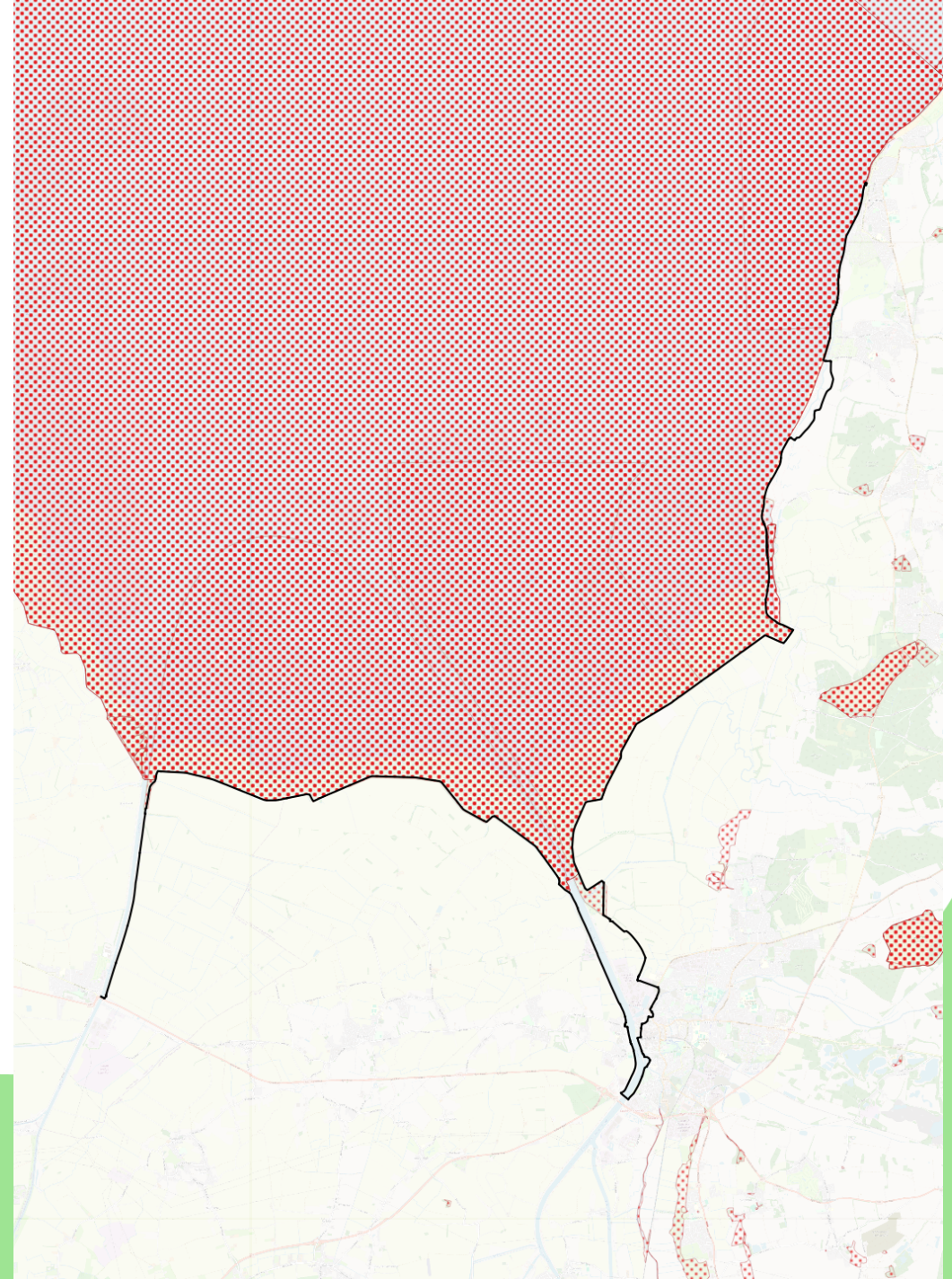
Designations

The Wash

- RAMSAR
- Special Protection Area (SPA)
- Special Area of Conservation (SAC)
- Site of Special Scientific Interest (SSSI)
- National Nature Reserve

Snettisham Common Land

Norfolk Coast National Landscape



Snettisham RSPB Nature Reserve waterbird refuge

The saltmarsh and mudflats here offer spectacular views, but aren't safe to walk on. The shingle flats are also an important nesting habitat for rare ringed plovers and oyster-catchers.



Waterbirds need their energy to find food, rest and keep warm so stick to the path here to avoid disturbing them.



Please keep dogs on the path and on leads at all times through the reserve.

Through the route a number of signs were designed and installed in line with the Habitat Regulations Assessment

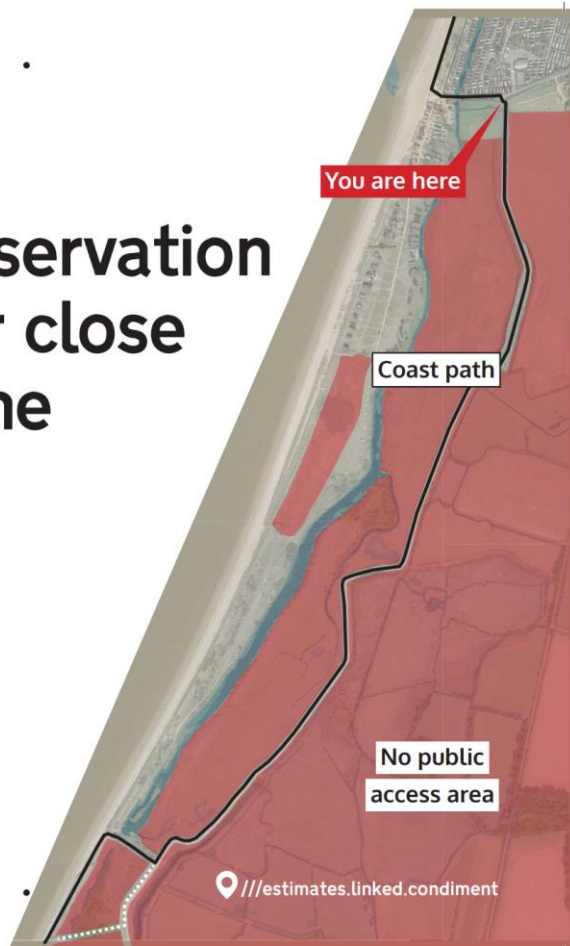


Norfolk County Council




NATIONAL TRAIL 

This is a sensitive conservation site. Keep dogs under close control and stay on the flood bank footpath.



 **Sensitive conservation site. Please keep to the landward base of the flood bank**

 ///slogans.dancer.fruity



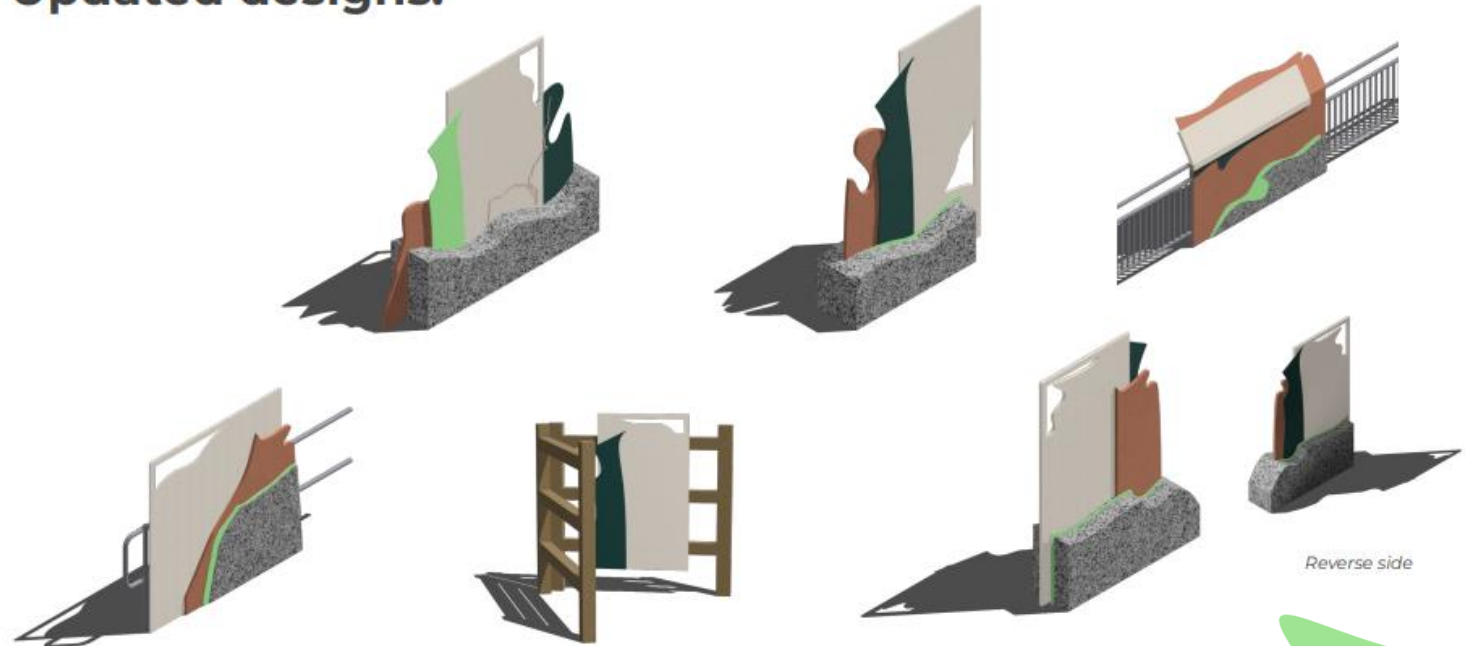
Interpretation

- Enhanced, creative information installations
- To be installed late January/early February 2025
- More engaging and appealing than typical information boards
- To be installed at Hunstanton, Heacham, Ken Hill, Snettisham
- Important information to help protect the sensitive nature the trail passes through
- Tactile and accessible (includes Braille)



Design Development - V5

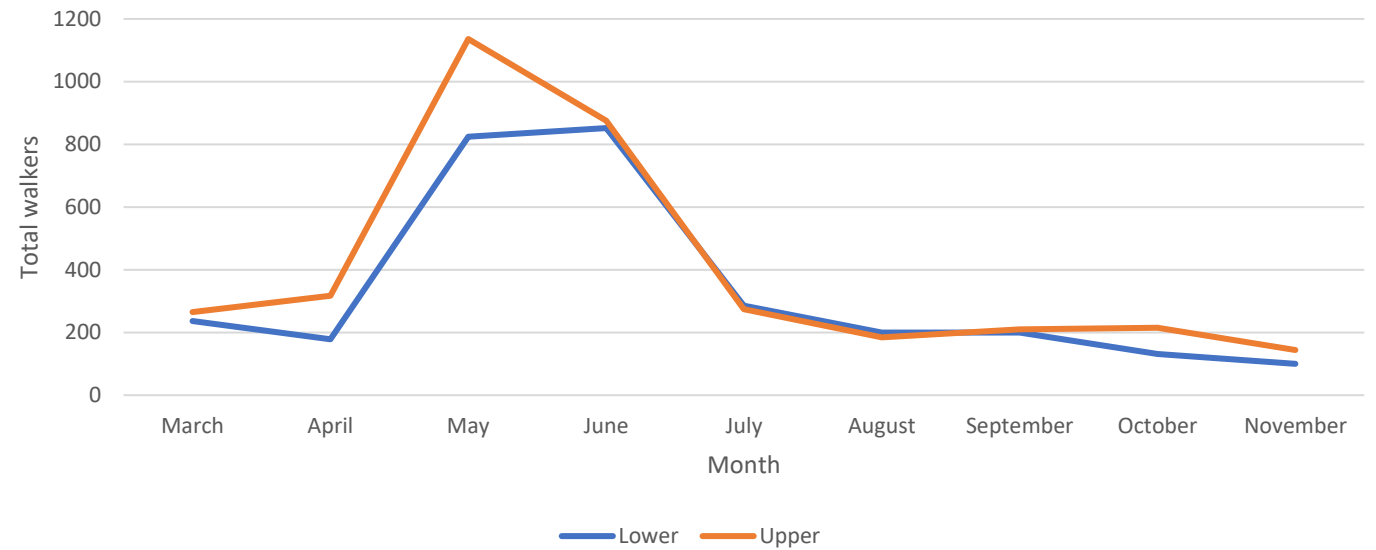
Updated designs:



People counters

- People counters installed at Snettisham and Wolferton
- Counters were installed on the top and bottom of bank at Wolferton to check compliance
- Continuing to work to encourage people to keep to the path
- From March to present:
 - Snettisham counter – 5248
 - Wolferton (upper and lower banks) - 6626
- Additional counters will be installed further round the path

Analysis of compliance at Wolferton (KCIII ECP)



Subtitle goes here

Infrastructure Delivery



Signage

In total:
30 fingerposts
28 waymarkers
22 'urban fingers' installed along the route



Gates



17 field gates (2 in 1 combination gates) and 2 kissing gates installed



Wolferton

Initial issue:

Steep cross gradient, lack of sufficient width and concrete block over utilities prevented access.

First proposal was to reprofile the bank with a large excavator with material creating an accessible path to walk on.

Natural England HRA: The works will take place between July 1st and October 31st avoid disturbance to the non-breeding bird assemblage and impacts on breeding redshank.



Wolferton

Final concept was a simple approach.

A retaining wall using posts and sleepers was installed. The posts were left high to act as a handrail

This was backfilled with aggregate to create an accessible route



Challenges



Challenges

Consents – Environment Agency, Internal Drainage Board, Landowner

Seasonality of audits – Vegetation/ cattle

Team resource

Promotion



Thank you